



EUROPEAN FOULBROOD

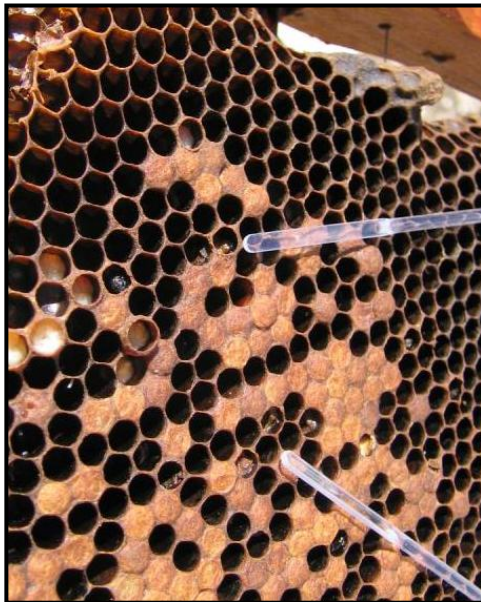
The EFB is a disease of unsealed (open) brood.

Etiological agent

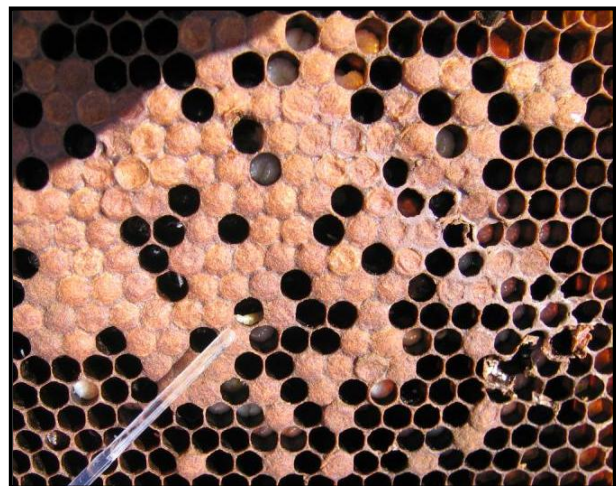
EFB is caused by the bacterium *Melissococcus plutonius*. Secondary agents like *Paenibacillus alvei* and *Enterococcus faecalis* are often present.

Symptomatic criteria (suspicion):

- **“Spotty” brood pattern / mosaic brood / scattered brood**
- **Slumped larvae**
- **Larvae with a yellowish to brown colour (generally in unsealed brood)**
- Capping with holes
- Vinegar or putrefaction odor of the larvae



Slumped larvae in unsealed cells



Slumped larvae



Larvae with a brown colour

This disease form has been designed to recognize the clinical signs of the disease in the honeybee colony.

Photos © Anses & Jean-Paul Faucon