



## European Union Reference Laboratory for honeybee health

### AMERICAN FOULBROOD

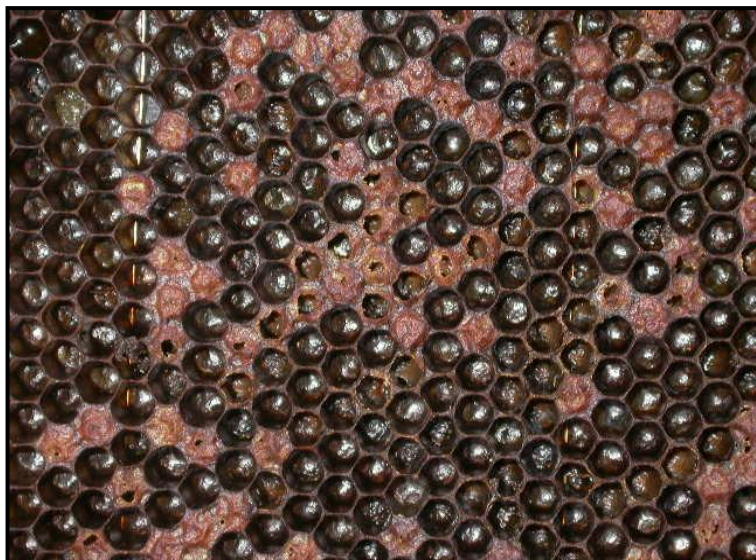
AFB is a notifiable disease in the European Union. It is a disease of sealed brood.

#### Etiological agent

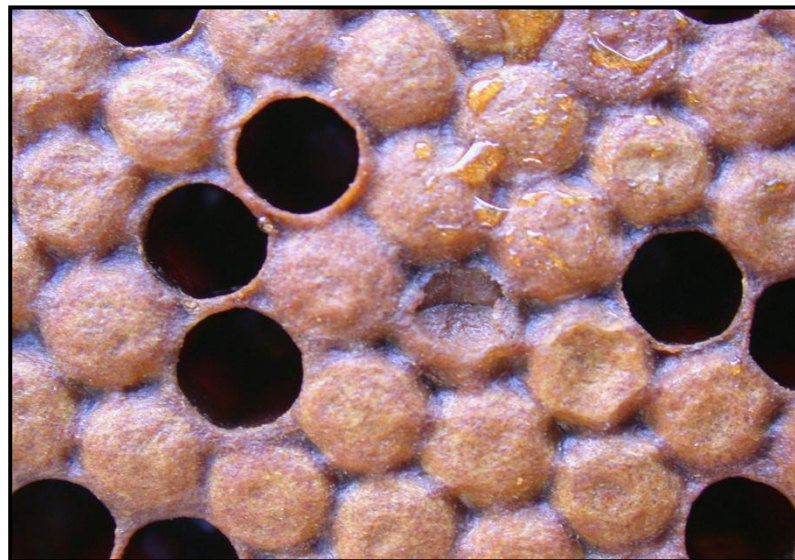
AFB is caused by a spore-forming bacterium, *Paenibacillus larvae*. It is this ability of the bacillus to spore that makes the disease so resistant to disinfection.

#### Symptomatic criteria (suspicion):

- **“Spotty” brood pattern / mosaic brood / scattered brood**
- **Ropy larvae (match test, viscosity)**
- **Specific odor of sick larvae**
- Capping with different colour / dark sunken cell cappings/ holes in cappings
- Sticky scales
- Coffee brown colour of the larva



Scattered brood



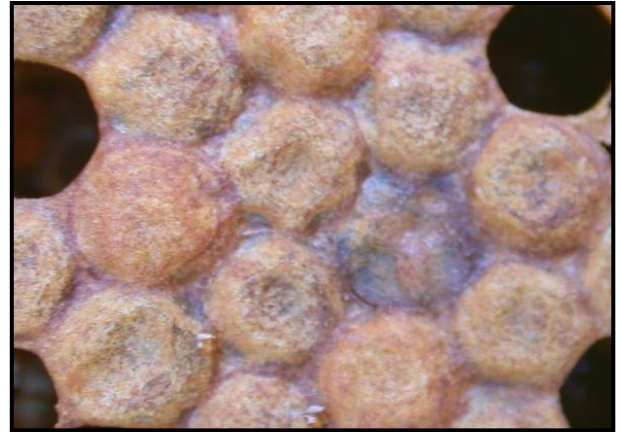
Dark sunken cell cappings

This disease form has been designed to recognize the clinical signs of the disease in the honeybee colony.

Photos © Anses & Jean-Paul Faucon



Holes in cappings



Dark sunken cell cappings



Viscosity test, match test

This disease form has been designed to recognize the clinical signs of the disease in the honeybee colony.

Photos © Anses & Jean-Paul Faucon