

# Α Π Ο Σ Π Α Σ Μ Α

## ΠΑΛΙΑ ΚΑΒΑΛΑ

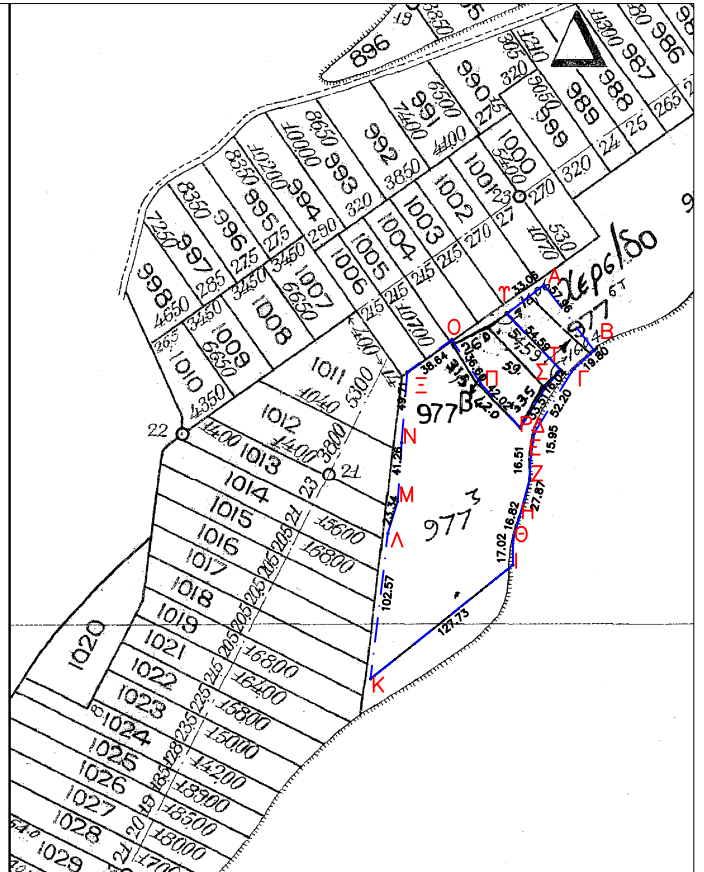
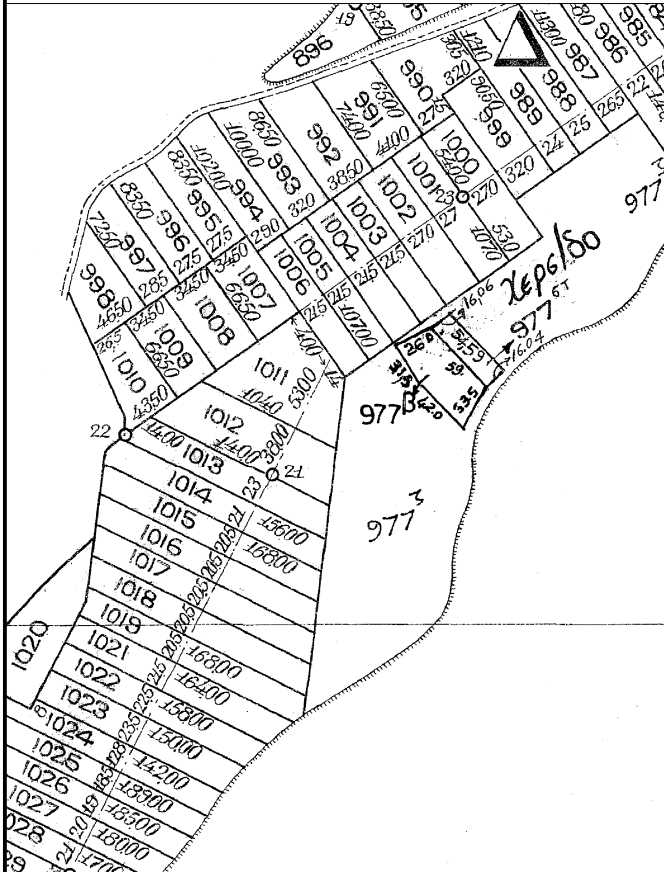
### "ΕΞΩΧΩΡΑΦΑ" ΚΑΒΑΛΑΣ

ΟΡΙΣΤΙΚΗ ΔΙΑΝΟΜΗ 1932

ΚΛΙΜΑΚΑ 1: 5000



ΕΓΣΑ 87



ΠΙΝΑΚΑΣ ΣΤΗΝΤΕΤΑΓΜΕΝΩΝ ΚΟΡΥΦΩΝ ΤΗΣ  
ΠΡΟΣ ΠΑΡΑΧΩΡΗΣΗ ΕΚΤΑΣΗΣ (ΕΓΣΑ '87)

Κορυφες	X	Y
A	530727.822	4537259.899
B	530763.062	4537213.913
Γ	530747.528	4537200.099
Δ	530720.141	4537150.350
E	530718.689	4537140.500
Z	530717.786	4537124.023
H	530710.540	4537097.124
Θ	530706.055	4537080.916
I	530706.055	4537063.904
K	530606.345	4536984.158
Λ	530618.502	4537085.967
M	530625.363	4537108.262
N	530628.167	4537149.412
Ξ	530632.017	4537198.955
O	530663.299	4537221.609
Π	530683.338	4537191.004
P	530711.337	4537159.699
Σ	530728.877	4537188.238
T	530739.690	4537200.073
Υ	530701.881	4537239.420

Εμβαδον (Α, Β, Γ, ... Σ, Τ, Υ, Α) = 17.485,54 τ.μ.