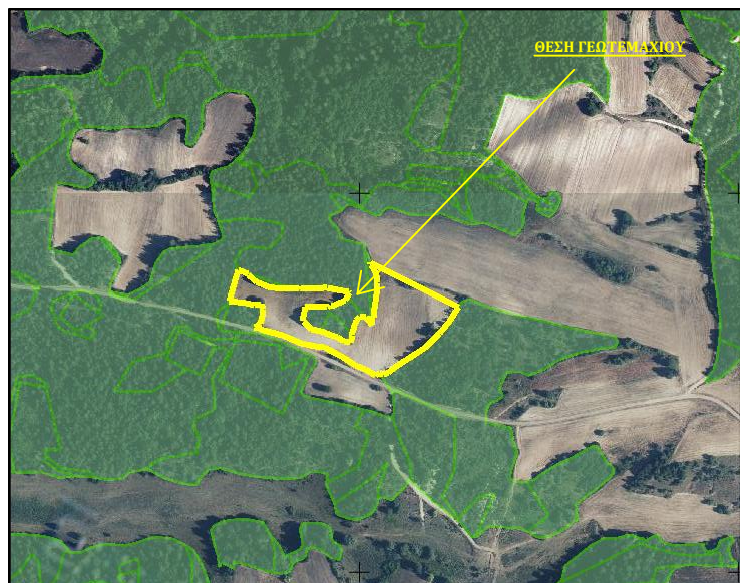


**ΑΓΡΟΚΤΗΜΑ ΠΟΥΛΑΝΕΜΟΥ
ΔΗΜΟΤΙΚΗ ΕΝΟΤΗΤΑ ΑΚΡΙΤΩΝ
ΔΗΜΟΣ ΝΕΣΤΟΡΙΟΥ Π.Ε. ΚΑΣΤΟΡΙΑΣ
ΟΔΟΠΟΡΙΚΟ - ΘΕΣΗ ΓΕΩΤΕΜΑΧΙΟΥ (ΑΠΟΣΠΑΣΜΑ GOOGLE EARTH)
ΚΑΙΜΑΚΑ 1:5000**



Πίνακας Συντεταγμένων κατά ΕΓΣΣΑ '87 των κορυφών του Α,Β,Γ.....Ω53,Ω54,Α.
Εμβαδόν τετραγώνου = 18800.41 τ.μ. - Περίμετρος = 1029.41 μ.

α/α	X	Y	Αποστάσεις (m)
A	249351.23	4492354.23	----
B	249361.39	4492352.57	A - B: 10.29
Γ	249371.02	4492352.95	B - Γ: 9.64
Δ	249373.24	4492346.88	Γ - Δ: 6.47
E	249372.08	4492337.20	Δ - E: 9.75
Z	249370.04	4492328.30	E - Z: 9.13
H	249365.29	4492324.92	Z - H: 5.84
Θ	249362.46	4492322.91	H - Θ: 3.47
I	249368.77	4492321.14	Θ - I: 6.55
K	249373.67	4492318.83	I - K: 5.42
Λ	249389.22	4492314.72	K - Λ: 16.08
M	249399.04	4492312.13	Λ - M: 10.16
N	249423.66	4492302.38	M - N: 26.48
Ξ	249442.77	4492297.88	N - Ξ: 19.63
O	249453.95	4492296.40	Ξ - O: 11.28
Π	249477.41	4492283.98	O - Π: 26.55
P	249495.84	4492273.07	Π - P: 21.42
Σ	249508.60	4492267.06	P - Σ: 14.11
T	249515.47	4492263.01	Σ - T: 7.98
Y	249522.07	4492259.04	T - Y: 7.70
Φ	249526.74	4492261.90	Y - Φ: 5.48
X	249532.15	4492261.46	Φ - X: 5.44
Ψ	249539.29	4492264.03	X - Ψ: 7.58
Ω	249551.57	4492273.13	Ψ - Ω: 15.28
Ω1	249580.14	4492291.68	Ω0 - Ω1: 34.07
Ω2	249587.65	4492296.55	Ω1 - Ω2: 8.95
Ω3	249597.76	4492306.41	Ω2 - Ω3: 14.12
Ω4	249606.06	4492314.51	Ω3 - Ω4: 11.59
Ω5	249619.93	4492330.46	Ω4 - Ω5: 21.14
Ω6	249626.86	4492341.76	Ω5 - Ω6: 13.26
Ω7	249631.45	4492349.24	Ω6 - Ω7: 8.77
Ω8	249515.84	4492408.00	Ω7 - Ω8: 129.69
Ω9	249516.00	4492405.61	Ω8 - Ω9: 2.39
Ω10	249518.69	4492400.82	Ω9 - Ω10: 5.50
Ω11	249523.67	4492390.68	Ω10 - Ω11: 11.29
Ω12	249523.95	4492381.84	Ω11 - Ω12: 8.85
Ω13	249522.65	4492366.19	Ω12 - Ω13: 15.70
Ω14	249520.09	4492348.37	Ω13 - Ω14: 18.00
Ω15	249520.70	4492334.55	Ω14 - Ω15: 13.84
Ω16	249516.58	4492338.66	Ω15 - Ω16: 5.82
Ω17	249517.91	4492326.18	Ω16 - Ω17: 12.55
Ω18	249508.46	4492336.53	Ω17 - Ω18: 14.01
Ω19	249500.94	4492337.14	Ω18 - Ω19: 7.55
Ω20	249497.08	4492332.41	Ω19 - Ω20: 6.11
Ω21	249494.81	4492325.92	Ω20 - Ω21: 6.87
Ω22	249491.67	4492316.94	Ω21 - Ω22: 9.51
Ω23	249490.87	4492312.50	Ω22 - Ω23: 4.51
Ω24	249489.23	4492303.33	Ω23 - Ω24: 9.32
Ω25	249480.68	4492304.36	Ω24 - Ω25: 8.61
Ω26	249471.25	4492309.26	Ω25 - Ω26: 10.63
Ω27	249463.40	4492312.97	Ω26 - Ω27: 8.68
Ω28	249455.13	4492316.13	Ω27 - Ω28: 8.85
Ω29	249443.34	4492319.39	Ω28 - Ω29: 12.23
Ω30	249437.78	4492320.92	Ω29 - Ω30: 5.77
Ω31	249427.99	4492329.97	Ω30 - Ω31: 13.33
Ω32	249426.33	4492331.50	Ω31 - Ω32: 2.25
Ω33	249426.97	4492336.95	Ω32 - Ω33: 5.49
Ω34	249429.75	4492349.74	Ω33 - Ω34: 13.09
Ω35	249444.29	4492348.84	Ω34 - Ω35: 14.57
Ω36	249458.65	4492349.31	Ω35 - Ω36: 14.36
Ω37	249461.50	4492350.26	Ω36 - Ω37: 3.01
Ω38	249462.26	4492352.28	Ω37 - Ω38: 2.15
Ω39	249463.88	4492351.05	Ω38 - Ω39: 2.04
Ω40	249470.45	4492353.22	Ω39 - Ω40: 6.92
Ω41	249482.66	4492358.81	Ω40 - Ω41: 13.42
Ω42	249487.17	4492367.93	Ω41 - Ω42: 10.18
Ω43	249485.84	4492369.25	Ω42 - Ω43: 1.87
Ω44	249459.06	4492374.06	Ω43 - Ω44: 27.21
Ω45	249452.52	4492374.11	Ω44 - Ω45: 6.55
Ω46	249421.38	4492372.70	Ω45 - Ω46: 31.17
Ω47	249412.40	4492373.17	Ω46 - Ω47: 8.99
Ω48	249398.25	4492373.91	Ω47 - Ω48: 14.17
Ω49	249380.44	4492376.02	Ω48 - Ω49: 17.94
Ω50	249365.07	4492382.61	Ω49 - Ω50: 16.72
Ω51	249354.48	4492392.26	Ω50 - Ω51: 14.32
Ω52	249353.91	4492393.42	Ω51 - Ω52: 1.30
Ω53	249340.98	4492397.90	Ω52 - Ω53: 13.68
Ω54	249328.85	4492357.52	Ω53 - Ω54: 42.16
A	249351.23	4492354.23	Ω54 - A: 22.62