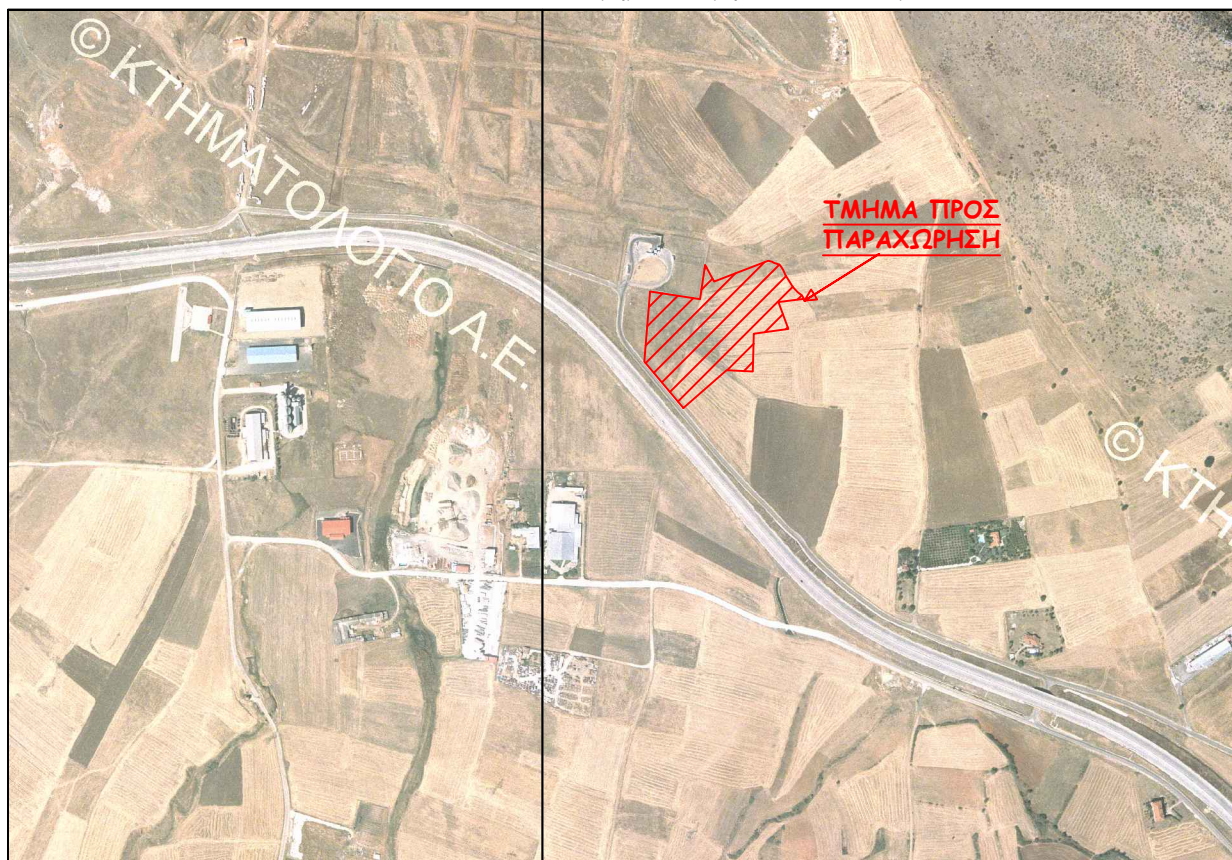


ΑΓΡΟΚΤΗΜΑ ΑΡΓΟΣ ΟΡΕΣΤΙΚΟ ΚΑΣΤΟΡΙΑΣ (ΑΝΑΜΟΡΦΩΣΗ ΕΤΟΥΣ 1966)

ΑΠΟΣΠΑΣΜΑ Α/Φ ΠΗΓΗ ΕΘΝΙΚΟ ΚΤΗΜΑΤΟΛΟΓΙΟ

ΑΡΙΘΜΟΣ ΤΕΜΑΧΙΟΥ Τμήμα 1063μη Ε=27.653,44τ.μ.



Συντεταγμένες Τμήματος 2 ΕΓΣΑ '87

Κορυφή	X	Y	Πλευρά-Μήκος
29	268211.36	4484399.78	2930 = 85.12
30	268156.73	4484465.06	3031 = 105.55
31	268165.03	4484570.29	3132 = 75.55
32	268239.69	4484558.71	3233 = 50.55
33	268247.43	4484608.67	3334 = 21.48
34	268257.54	4484589.72	3435 = 86.89
35	268338.72	4484620.70	3536 = 6.03
36	268344.57	4484619.21	3637 = 3.54
37	268347.61	4484617.41	3738 = 1.55
38	268349.08	4484616.90	3839 = 28.27
39	268362.43	4484591.99	3940 = 15.04
40	268371.00	4484579.63	4041 = 18.71
41	268386.93	4484569.81	4142 = 8.12
42	268392.35	4484563.78	4243 = 38.82
43	268353.86	4484558.80	4344 = 42.92
44	268369.00	4484518.64	4445 = 52.24
45	268317.27	4484511.34	4546 = 56.74
46	268315.89	4484454.62	4647 = 39.61
47	268276.33	4484456.69	4729 = 86.38
Εμβαδό:	27653.44	Περίμετρος:	823.11

Συντεταγμένες Τμήματος 2 ΗΑΤΤ

Κορυφή	X	Y	Πλευρά-Μήκος
29	-17063.13	25532.89	2930 = 85.12
30	-17119.61	25596.57	3031 = 105.55
31	-17114.33	25702.00	3132 = 75.55
32	-17039.37	25692.57	3233 = 50.55
33	-17033.07	25742.73	3334 = 21.48
34	-17022.42	25724.08	3435 = 86.89
35	-16942.16	25757.37	3536 = 6.03
36	-16936.28	25756.05	3637 = 3.54
37	-16933.18	25754.34	3738 = 1.55
38	-16931.70	25753.88	3839 = 28.27
39	-16917.64	25729.36	3940 = 15.04
40	-16908.72	25717.25	4041 = 18.71
41	-16892.51	25707.90	4142 = 8.12
42	-16886.92	25702.02	4243 = 38.82
43	-16925.25	25695.94	4344 = 42.92
44	-16908.96	25656.23	4445 = 52.24
45	-16960.46	25647.45	4546 = 56.74
46	-16960.21	25590.71	4647 = 39.61
47	-16999.81	25591.65	4729 = 86.38
Εμβαδό:	27653.44	Περίμετρος:	823.11