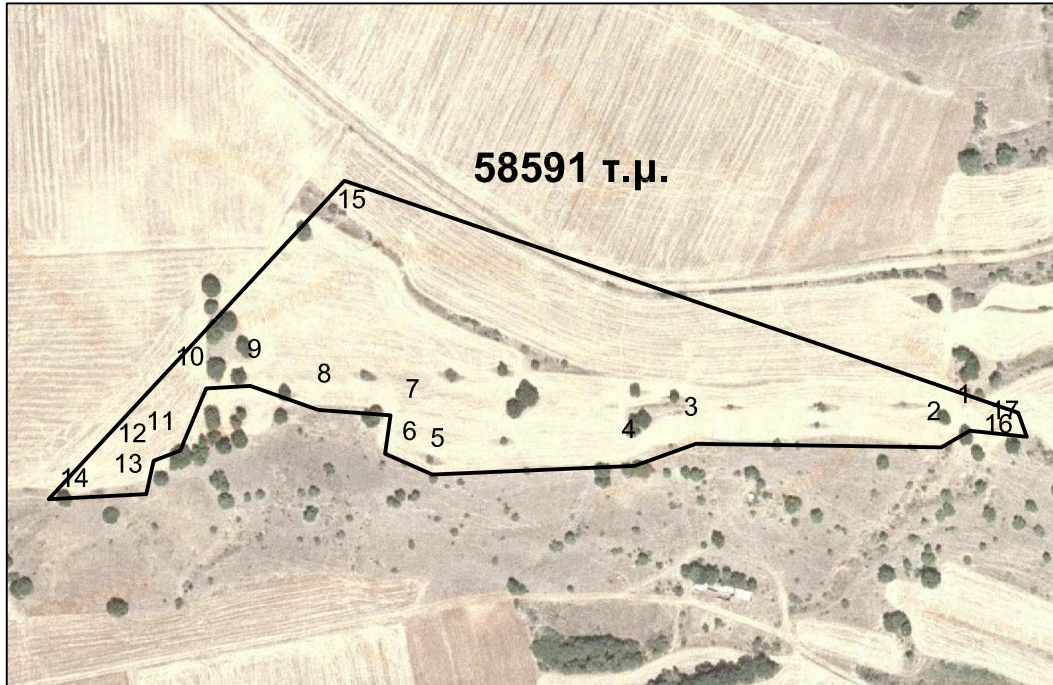


Πακαλτσής Θεόδωρος



Πίνακας Συντεταγμένων των κορυφών του 1,2,3.....
Εμβαδόν τεμαχίου = 58591 τ.μ. - Περίμετρος = 1510.11 μ.

α/α	X	Y	Αποστάσεις
1	311945.53	4488927.14	---
2	311926.56	4488916.11	1 - 2: 21.95
3	311764.24	4488918.58	2 - 3: 162.33
4	311723.56	4488903.93	3 - 4: 43.24
5	311589.99	4488898.24	4 - 5: 133.69
6	311558.74	4488911.98	5 - 6: 34.13
7	311562.38	4488937.31	6 - 7: 25.59
8	311514.55	4488940.85	7 - 8: 47.96
9	311469.66	4488956.88	8 - 9: 47.66
10	311440.54	4488955.09	9 - 10: 29.18
11	311423.37	4488914.12	10 - 11: 44.43
12	311405.68	4488907.34	11 - 12: 18.95
13	311400.95	4488885.22	12 - 13: 22.62
14	311336.25	4488881.90	13 - 14: 64.78
15	311531.97	4489092.50	14 - 15: 287.50
16	311977.54	4488939.07	15 - 16: 471.25
17	311983.26	4488923.16	16 - 17: 16.90
1	311945.53	4488927.14	17 - 1: 37.94