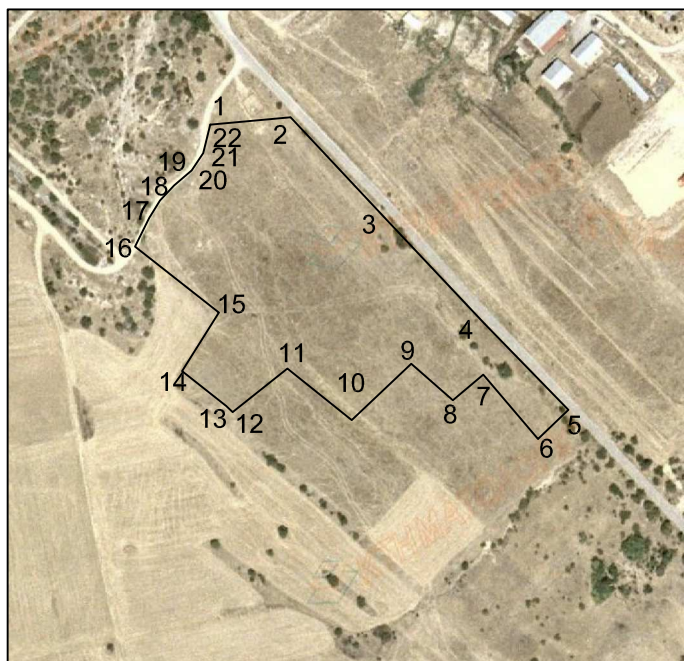


Βασιλειάδης Μιχαήλ 28.874 τ.μ.



Πίνακας Συντεταγμένων των κορυφών του 1,2,3.....
 Εμβαδόν τεμαχίου = 28874 τ.μ. - Περίμετρος = 878.45 μ.

α/α	X	Y	Αποστάσεις
1	325594.06	4473675.67	---
2	325647.24	4473680.54	1 - 2: 53.40
3	325709.93	4473613.72	2 - 3: 91.62
4	325775.72	4473543.92	3 - 4: 95.92
5	325831.02	4473487.07	4 - 5: 79.31
6	325810.90	4473467.81	5 - 6: 27.85
7	325774.60	4473510.40	6 - 7: 55.96
8	325754.60	4473493.36	7 - 8: 26.28
9	325726.97	4473517.66	8 - 9: 36.80
10	325687.76	4473480.32	9 - 10: 54.14
11	325645.17	4473514.51	10 - 11: 54.62
12	325608.93	4473485.53	11 - 12: 46.40
13	325604.78	4473489.56	12 - 13: 5.78
14	325575.62	4473512.82	13 - 14: 37.31
15	325599.95	4473551.43	14 - 15: 45.64
16	325544.35	4473595.10	15 - 16: 70.70
17	325553.62	4473613.98	16 - 17: 21.04
18	325560.84	4473625.56	17 - 18: 13.65
19	325570.30	4473635.41	18 - 19: 13.65
20	325581.95	4473645.35	19 - 20: 15.31
21	325589.41	4473656.90	20 - 21: 13.75
22	325594.06	4473675.67	21 - 22: 19.33