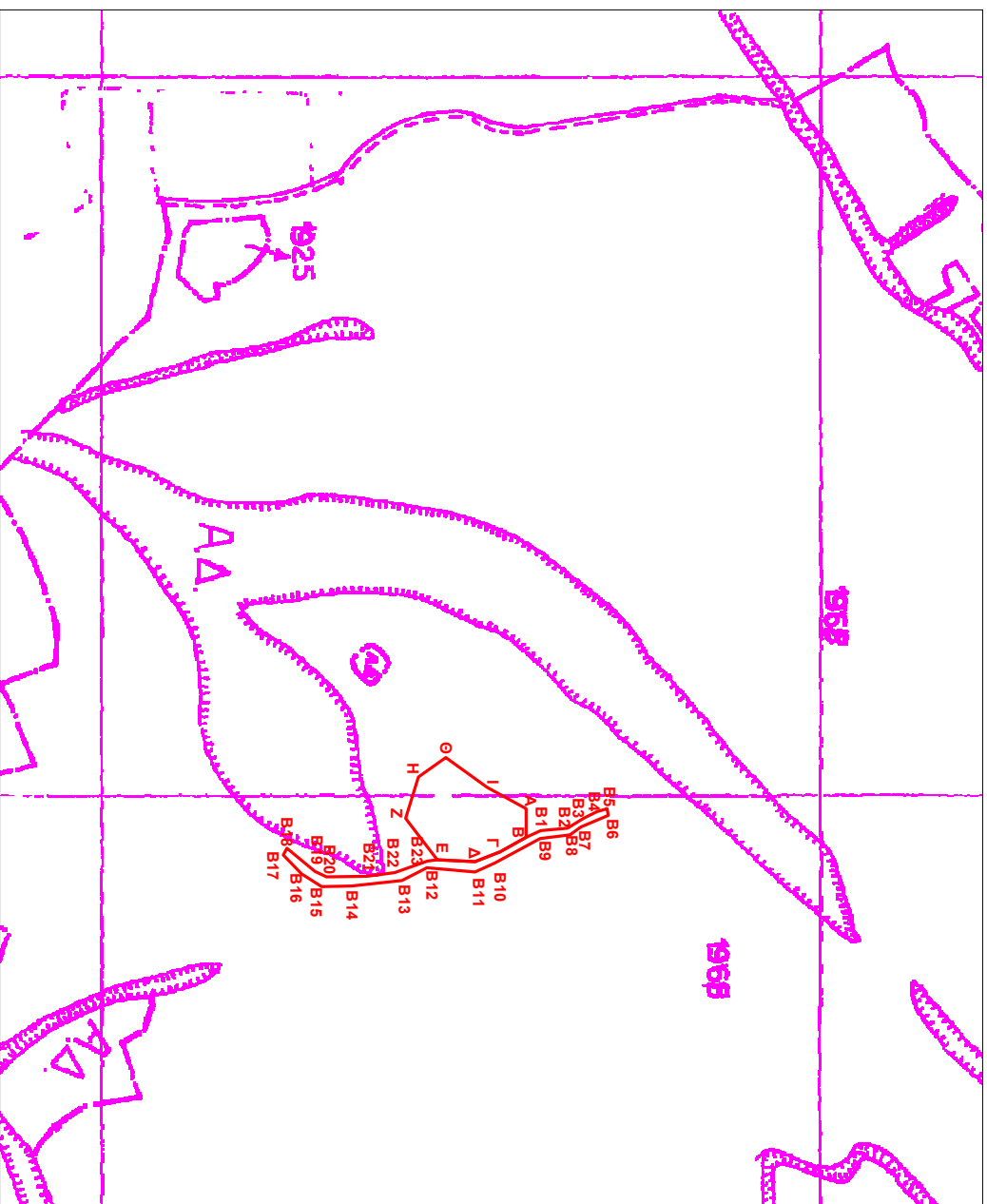


ΔΙΑΓΡΑΜΜΑ ΕΚΤΑΣΗΣ ΠΡΟΣ ΠΑΡΑΧΩΡΗΣΗ ΚΑΤΑ ΧΡΗΣΗ

ΑΓΡΟΚΤΗΜΑ ΠΛΑΤΑΝΟΒΡΥΣΗΣ - Σ. Διονομή 1967

ΤΜΗΜΑ ΥΠ' ΑΡΙΘΜ. 1968 ΑΓΡΟΤΕΜΑΧΙΟΥ - ΕΚΤΑΣΗ 4.000 τ.μ.

ΚΑΙΜΑΚΑ 1 / 5000



ΠΙΝΑΚΑΣ ΣΥΝΤΕΤΑΓΜΕΝΩΝ ΣΕ ΕΠΣΑ 87

A	=	X=531788.70	Y=4559037.83
B	=	X=531808.47	Y=4559037.92
Γ	=	X=531818.63	Y=4559019.43
Δ	=	X=531825.68	Y=4559002.22
E	=	X=531824.11	Y=4558976.04
Z	=	X=531795.46	Y=4558953.82
H	=	X=531766.79	Y=4558962.82
Θ	=	X=531753.10	Y=4558982.14
I	=	X=531773.84	Y=4559010.91
A	=	X=531788.70	Y=4559037.83

ΠΙΝΑΚΑΣ ΣΥΝΤΕΤΑΓΜΕΝΩΝ ΔΡΟΜΟΥ

B	=	X=531808.47	Y=4559037.92
B1	=	X=531803.88	Y=4559047.93
B2	=	X=531802.29	Y=4559066.45
B3	=	X=531795.41	Y=4559077.56
B4	=	X=531790.65	Y=4559087.09
B5	=	X=531788.53	Y=4559093.96
B6	=	X=531793.29	Y=4559095.02
B7	=	X=531801.23	Y=4559075.97
B8	=	X=531807.05	Y=4559068.30
B9	=	X=531809.43	Y=4559047.40
B10	=	X=531826.37	Y=4559016.44
B11	=	X=531832.72	Y=4559002.42
B12	=	X=531829.81	Y=4558968.82
B13	=	X=531838.54	Y=4558951.35
B14	=	X=531842.51	Y=4558916.43
B15	=	X=531843.03	Y=4558895.53
B16	=	X=531833.77	Y=4558881.77
B17	=	X=531820.81	Y=4558868.80
B18	=	X=531816.31	Y=4558871.45
B19	=	X=531832.45	Y=4558890.76
B20	=	X=531836.16	Y=4558898.97
B21	=	X=531835.63	Y=4558927.28
B22	=	X=531833.24	Y=4558946.59
B23	=	X=531825.04	Y=4558969.08
E	=	X=531824.11	Y=4558976.04
Δ	=	X=531825.68	Y=4559002.22
Γ	=	X=531818.63	Y=4559019.43
B	=	X=531808.47	Y=4559037.92

ΕΒΑΔΩΝ ΔΡΟΜΟΥ 1470.78